



SUNCOMBE
CIP & PROCESS ENGINEERS

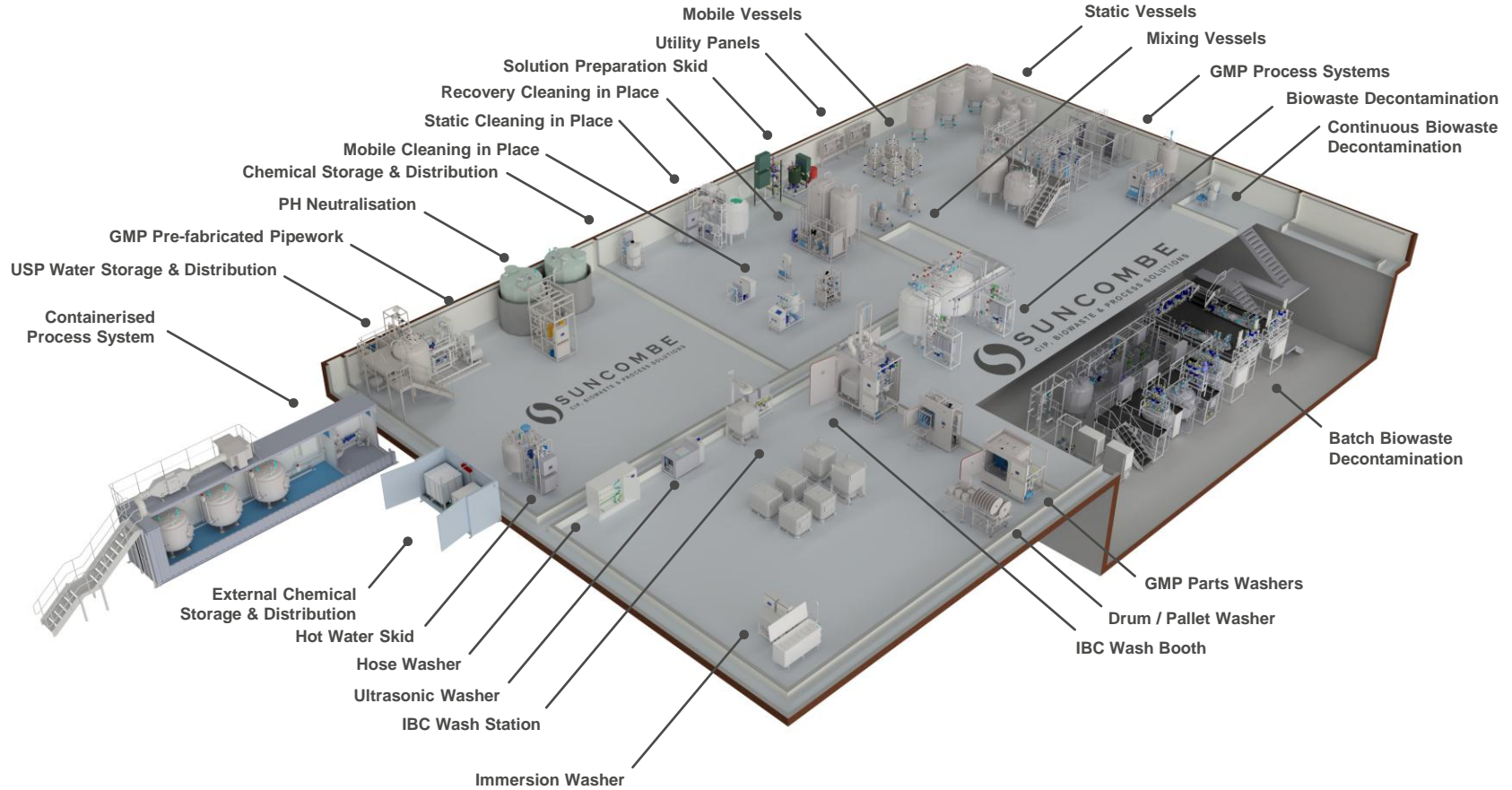
CIP+Plus™ Systems



Suncombe Ltd, Jade House, Lockfield Avenue, Brimsdown, Enfield, Middlesex, EN37JY, United Kingdom

T +44(0)20-8443-3454 F +44(0)20-8443-3969 E info@suncombe.com W www.suncombe.com

www.suncombe.com



Product Portfolio

About Us

Suncombe Limited is an organization dedicated to the advancement of Clean in Place (CIP) and Hygienic processing technology. We have always targeted leading-edge technologies. Our mission is to utilise forward-thinking expertise that anticipate and satisfy the needs of cleaning and hygienic processing requirements of the future.

Introduction

The original Suncombe CIP+Plus™ systems were introduced in 1963. Since this time they have been continuously developed to provide a technologically advanced and robust, reliable means of supplying repeatable, validateable, controllable CIP cleaning.

Every unit is specifically designed for its particular application and is developed by Suncombe CIP engineers together with the client personnel to provide the optimum cleaning system and a simple validation trail. The range is based on standard modules with individual units custom designed and built - in-house - for your specific application.

Typical Industries

Food, Dairy, Brewery, Beverage, Agro-chemical, Flavourings, Healthcare, Personal Care, and many other processing industries.

Typical Applications

Tanks, Vessels, Vats, Fermenters, Mixers, Processors, Road Tankers, Pipework, Valves, Mills, Coaters, Filters, Pumps, Dryers, Fillers and many others.

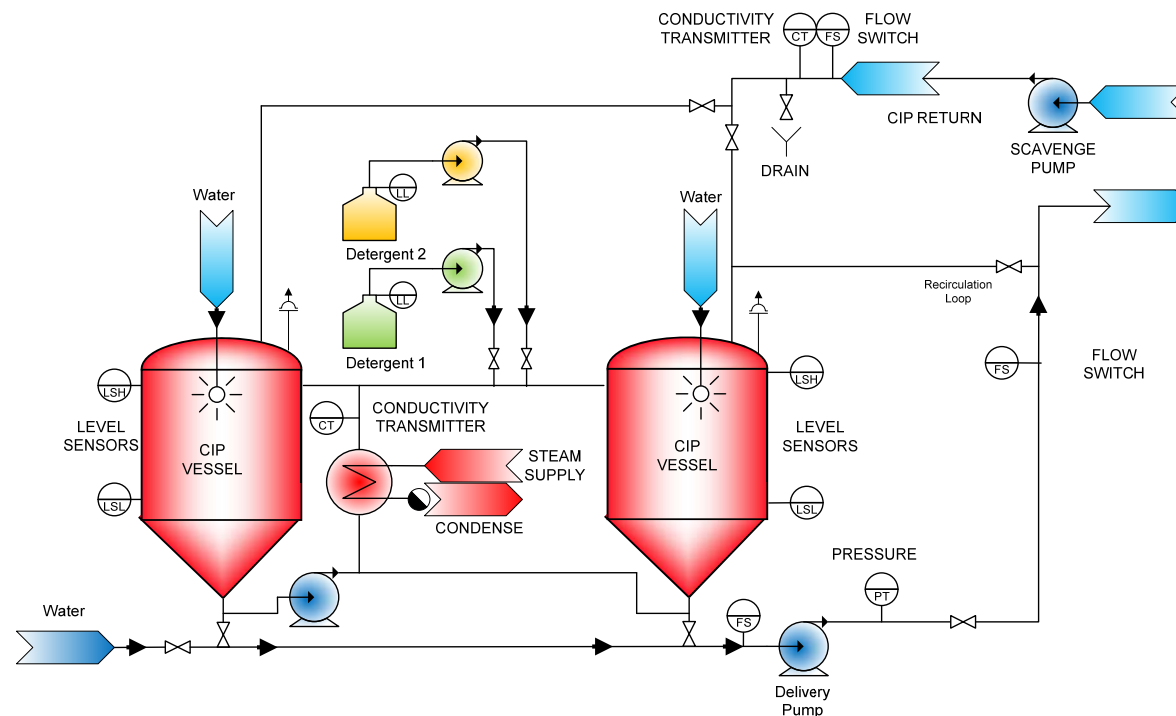
Cleaning Philosophy

The Suncombe CIP+Plus™ system utilises the **Total Recovery** philosophy. That is, the final rinse is reclaimed for re-use as the next pre-rinse and the detergent rinse is also reclaimed for re-use. This is the most economic method of CIP cleaning. Options are available for a single tank system to use the partial

recovery cleaning philosophy.

That is, one of the rinses are reclaimed for re-use. This can be the final rinse for re-use as the next pre-rinse or the detergent rinse for re-use as the next detergent rinse. Both partial and total recovery philosophies are used throughout the typical industries. These systems are available with a single CIP feed (single channel) or with multiple CIP feeds (multiple channel).

Typical Flow Diagram



Reference	Tank Capacity litres	Flowrate litres/min	Pressure Bar	A mm	B mm	C mm	D mm
CIP+Plus™ 600	600	0-100	1-5	1,200	2,000	1,000	1,800
CIP+Plus™ 1000	1,000	0-250	1-5	2,000	2,000	1,000	1,800
CIP+Plus™ 2000	2,000	0-500	1-5	2,500	2,000	1,250	2,100
CIP+Plus™ 3400	3,400	0-1,000	1-5	3,000	2,000	1,500	2,350
CIP+Plus™ 5000	4,500	0-1,250	1-5	3,000	2,000	2,000	2,350
CIP+Plus™ 10000	10,000	0-1,250	1-5	4,000	2,000	2,200	3,000



Automation

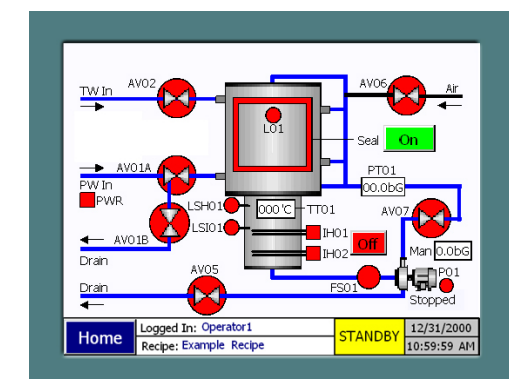
CIPSuite#1600™ - Automatic control system with 6 recipes with variable times, door mounted text display for parameter setting and alarm notification, repeatable automatic cycles, Incorporating a small PLC controller, the Level 1600 Automation system is designed with the facilities required to provide a number of repeatable automatic cycles with a versatile text display for operator interface.

Operator Interface



CIPSuite#2000™ - Automatic control system with 20 fully configurable recipes, I/O faceplates, mimic diagrams, profibus, ethernet and hard wired interfaces, optional printer & datalogger, repeatable automatic cycles, User control with passwords, In built troubleshooting and diagnostic ability.

Mimic



Recipe Setup

