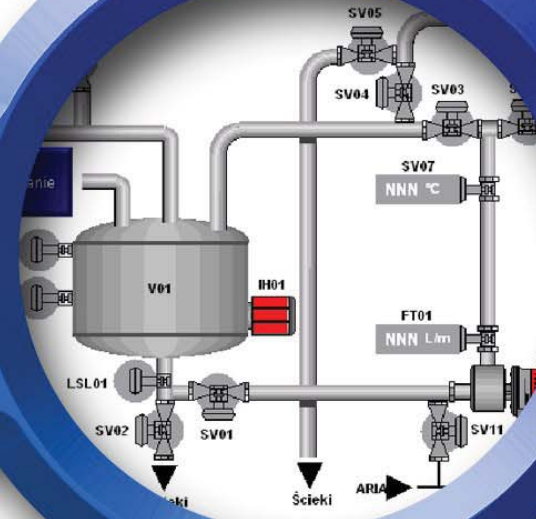




SUNCOMBE
CIP & PROCESS ENGINEERS

ControlSuite™



www.suncombe.com

Suncombe Ltd, Jade House, Lockfield Avenue, Brimsdown, Enfield, Middlesex, EN37JY, United Kingdom

T +44(0)20-8443-3454 F +44(0)20-8443-3969 E info@suncombe.com W www.suncombe.com

About Us

Suncombe Ltd engineer automatic processing technology for the BioPharma, Medical, Food and other critical hygiene industries.

Formed in 1961, we have a tremendous amount of experience in-house and provide a high level of technical and engineering expertise. Our completed projects range from stand-alone systems to complete processing solutions. Our products are built to a high quality and encompass all relevant legislation, guidelines, testing, documentation, quality assurance and traceability requirements.

ControlSuite™ Introduction

Developed over the last 50+ years specifically for control of the Suncombe range of products, the ControlSuite™ range of packages are Automatic Control Systems which are renowned for their ease of use, reliability and longevity. Developed with coordination with clients operations staff, engineers and validation staff, they encompass all elements required to provide a controllable, repeatable automatic system.

ControlSuite™ Design

Designed to GAMP guidelines, the automation systems are produced in house by qualified electrical designers and software engineers, in a manner encompassing software development standards (including TickIT, GAMP and IEE guidelines), quality control systems, change control during and post development and development to a software life cycle.

Specifically developed for each processing system, they incorporate the functionality required, together with simplistic Operator interaction and with plant interfacing to other equipment.



Support

The Suncombe Technical Support and Customer Care departments' obligation is to provide total customer support. This support starts at the proposal stage, continues throughout the contract and thereafter. A personal customer care agent will be assigned to you at quotation stage and will support you throughout. The department currently supports all of our clients over the last 50 years. Support includes advise and surveys, installation and commissioning, User training, call-out repairs and service contracts for preventative maintenance.

ControlSuite™ Levels

Available in different versions, from ControlSuite1000™ to ControlSuite4000™, they all incorporate the optimum control for ideal processing.

LEAN Technology

Adopting LEAN principles, all Suncombe products are developed to ensure they minimise utilities and time, whilst ensuring the safety of the operators and the efficiency of the processing. Utilising innovative automation, they incorporate a combination of traditional and new technologies to provide an environmentally friendly, low utility and energy usage facility that is safe and ergonomic for the operators. Our automation systems are configured to be able to incorporate LEAN principles including Overall Equipment Effectiveness, Energy Lean, downtime maintenance and other procedures.

Validation/ Documentation

The lifecycle approach is adopted (DQ, FDS, HDS, SDS, FAT, SAT, IQ & OQ) with validation being key to every stage of the development process, including Factory Acceptance Testing (FAT), SAT and Qualification.

ControlSuite™ Versions

- » ControlSuite™
- » CIPSuite™
- » BioSuite™
- » FilterSuite™

ControlSuite™ Level 1000

The Level 1000 Automation system is the base level automation system, which provides a robust and reliable simple hard coded automatic operation. Incorporating a low level PLC controller, the Level 1000 Automation system is designed with the facilities required to provide a repeatable automatic cycle but without the necessity for detailed operator interfaces.

Using push buttons, indicators and digital controllers for operator interface, the system incorporates a 2" display within the enclosure for parameter setting and simple diagnostics.



Specification

Enclosure Material: Stainless steel (other materials available on request)
Temperature range: 5°C to + 50°C
Operating Voltage: 230 V a.c. and 400 V a.c. (24 V d.c. control)
Hardware: Allen Bradley and Siemens PLC
Reporting: None
Operator Interface: Pushbutton, Indicators, digital Controller
Operations/Recipes: One
Additional Operator Positions: Remote Electrical Panel
Parameter Setting Method: From internal 2" interface
Number of HMI Screens: None
Manual Operation: Electrical Override
External Interfaces: Digital, hard wired
User Passwords: None, interface internally mounted
Data Recording: None
Documentation: Basic
Validation: Basic

ControlSuite™ Level 1600

The Level 1600 Automation system is an extension of the Level 1000, the base level automation system, which incorporates a larger PLC allowing additional I/O, operations and/or recipes and an door mounted text display for parameter setting and alarm notification. It provides a robust and reliable automatic operation. Incorporating a mid level PLC controller, the Level 1600 Automation system is designed with the facilities required to provide a number of repeatable automatic cycle with a versatile text display for operator interface.

Using push buttons, indicators and digital controllers for operator interface, the system incorporates a door mounted text display on the panel door for parameter setting, alarm notifications and simple diagnostics.



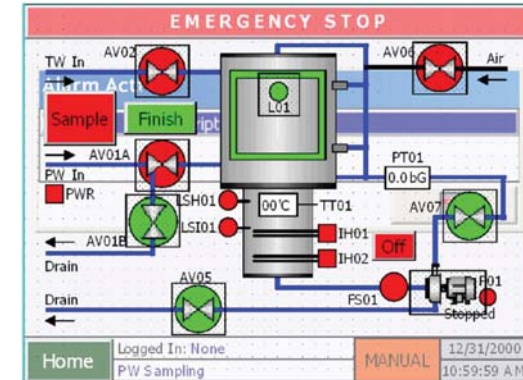
Specification

Enclosure Material: Stainless steel (other materials available on request)
Temperature range: 5°C to + 50°C
Operating Voltage: 230 V a.c. and 400 V a.c. (24 V d.c. control)
Hardware: Allen Bradley and Siemens PLC
Reporting: None
Operator Interface: Pushbutton, indicators, digital Controller, text display
Operations/Recipes: Six
Additional Operator Positions: Remote Electrical Panel
Parameter Setting Method: From door mounted text display
Number of HMI Screens: None
Manual Operation: Electrical Override
External Interfaces: Digital, hard wired
User Passwords: Key Lock
Data Recording: None
Documentation: Basic
Validation: Basic

ControlSuite™ Level 2000

The Level 2000 Automation system provides a full colour HMI operator interface providing the facilities to control the system, view the operation, preset all of the parameters and carry out maintenance and diagnostics. It provides a robust and reliable automatic operation. Incorporating a mid level PLC controller, the Level 2000 Automation system is designed with the facilities required to provide up to 25 repeatable automatic cycle with a versatile colour graphical HMI for operator interface.

The HMI incorporates an intuitive menu structure, allowing up to 10 different user levels. The levels are individually configurable, with the lower levels allowing simple operations with the higher levels allowing full configuration of the operating parameters and system settings.



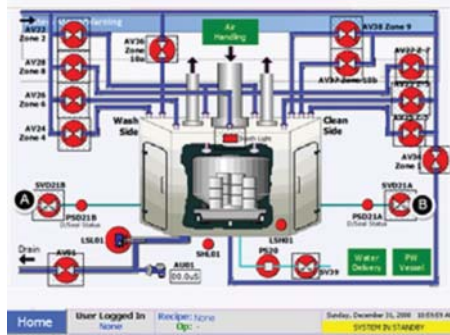
Specification

Enclosure Material: Stainless steel (other materials available on request)
Temperature range: 5°C to + 50°C
Operating Voltage: 230 V a.c. and 400 V a.c. (24 V d.c. control)
Hardware: Allen Bradley and Siemens PLC and HMI
Reporting: Printed records or 21CFR11 electronic records and batch reports.
Operator Interface: 6" colour graphical touch screen HMI (also available with 8", 10" or 15")
Operations/Recipes: 25
Additional Operator Positions: Remote HMIs
Parameter Setting Method: From HMI or remote control
Number of HMI Screens: 15
Manual Operation: From output/input page on HMI
External Interfaces: hard wired or Profibus
User Passwords: Yes
Data Recording: Printer
Documentation: Intermediate or Advanced
Validation: Intermediate or Advanced

ControlSuite™ Level 3000

The Level 3000 Automation system provides a high resolution full colour HMI operator interface providing the facilities to control the system, view the operation, preset all of the parameters and carry out maintenance and diagnostics. It provides a robust and reliable automatic operation. Incorporating a high level PLC controller, the Level 3000 Automation system is designed with the facilities required to provide up to 100 repeatable automatic cycles with a versatile colour graphical HMI for operator interface.

The HMI incorporates an intuitive menu structure, allowing up to 10 different user levels. The levels are individually configurable, with the lower levels allowing simple operations with the higher levels allowing full configuration of the operating parameters and system settings.



Specification

Enclosure Material: Stainless steel (other materials available on request)

Temperature range: 5°C to + 50°C

Operating Voltage: 230VAC or 400VAC (24VDC control)

Hardware: Allen Bradley and Siemens PLC and HMI Solution (option for DCS control)

Reporting: Printed records and 21CFR11 electronic records and batch reports.

Operator Interface: 8" high resolution colour graphical touch screen HMI (also available with 10" or 15")

Operations/Recipes: 100

Additional Operator Positions: Remote touch screen HMIs

Parameter Setting Method: From HMI or remote control

Number of HMI Screens: 30

Manual Operation: From HMI mimic diagrams and output/input page on HMI

External Interfaces: Digital, Analogue and Messages, hard wired, ethernet or Profibus

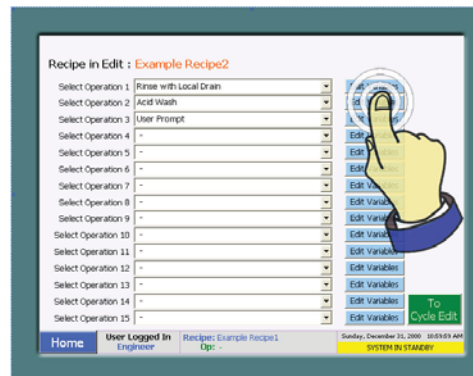
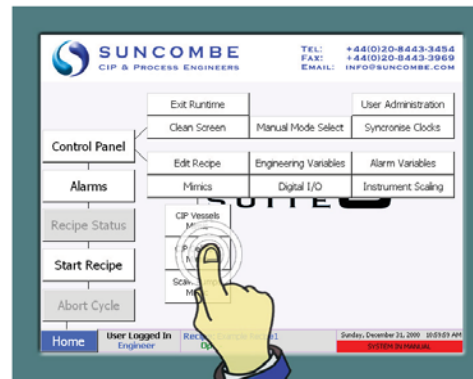
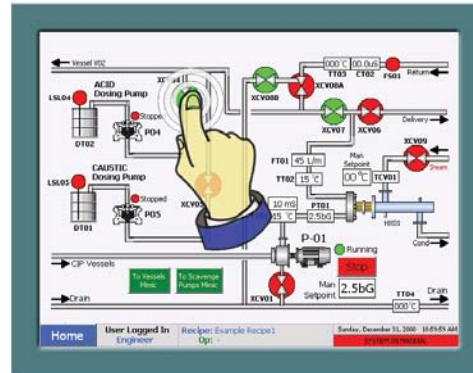
User Passwords: Yes

Data Recording: Printer, optional electronic data recorder

Documentation: Advanced

Validation: Advanced

Typical ControlSuite™ Level 3000 Operator Screens

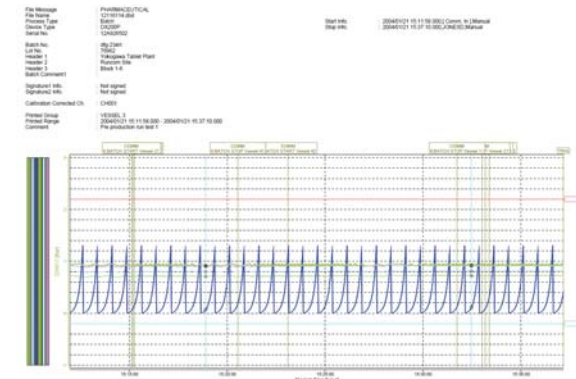


ControlSuite™ Level 3000 21CFR11 Options

The Level 3000 21CFR11 Options—incorporates a paperless chart recorder/datalogger to provide the abilities to record and store records in compliance with 21CFR11. The recorder is approved as 21CFR PART11 compliant in the application of electronic signatures and audit trail features.



Typical Batch Record



Recorder Version



