



SUNCOMBE
CIP & PROCESS ENGINEERS

IBC WASHERS



Suncombe Ltd, Jade House, Lockfield Avenue, Brimsdown, Enfield, Middlesex, EN37JY, United Kingdom

T +44(0)20-8443-3454 F +44(0)20-8443-3969 E info@suncombe.com W www.suncombe.com

www.suncombe.com

About Us

Suncombe Ltd supply Cleaning and hygienic processing technology for the BioPharma, Medical, Food and other critical hygiene industries. From CIP to PartsWashers, we are uniquely capable of offering you a complete washing and processing solution.

Formed in 1961, we have a tremendous amount of experience in-house and provide a high level of technical and engineering expertise. Our completed projects range from stand-alone systems to complete processing solutions. Our products are built to a high quality and encompass all relevant legislation, guidelines, testing, documentation, quality assurance and traceability requirements.

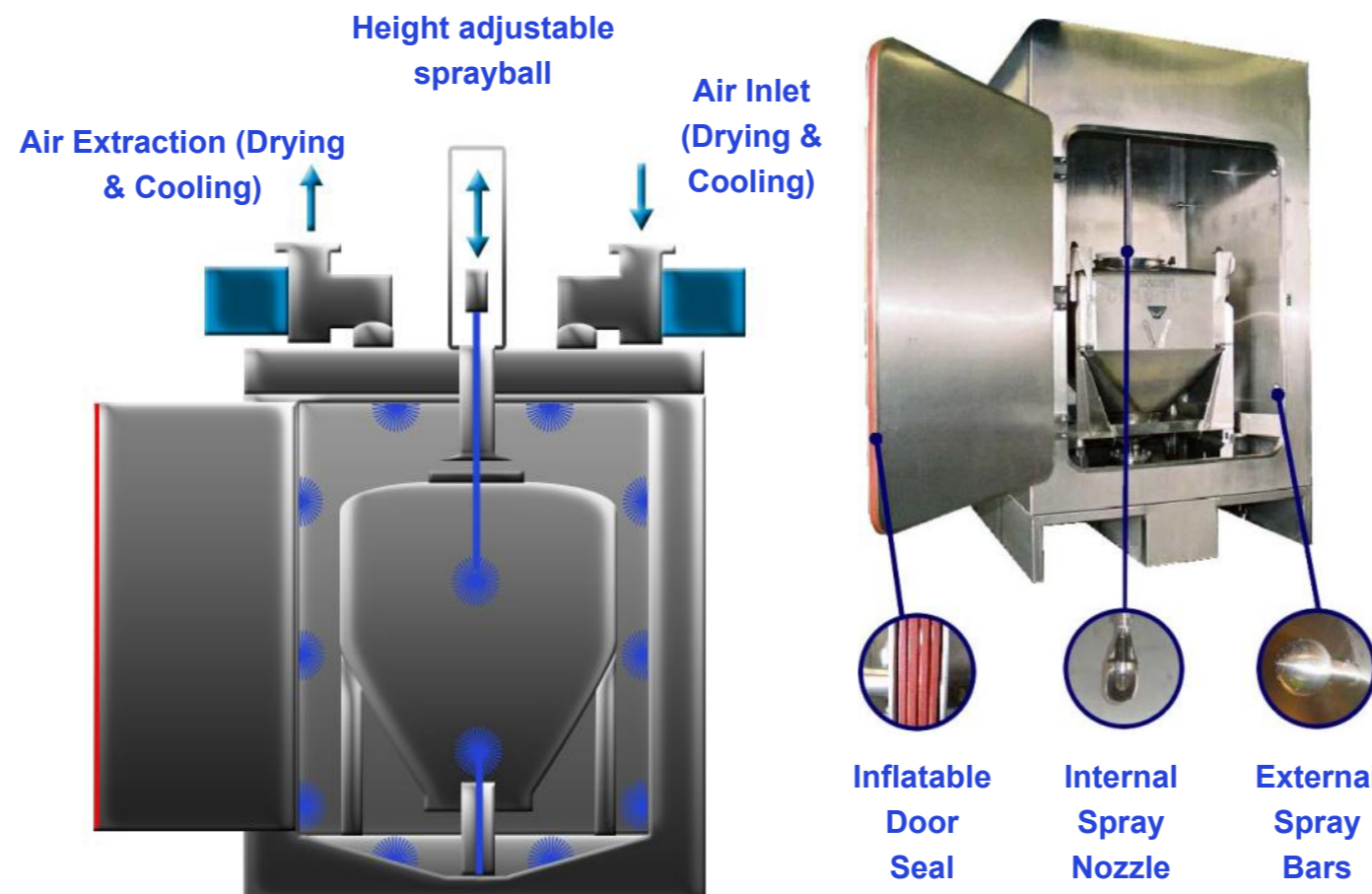
Introduction to IBCWashBooth™

The Suncombe IBCWashBooth™ is a high specification unit, using an innovative spray technique, that offers a contained, validatable unit to clean and dry Intermediate Bulk Containers (IBCs). Achieving excellent cleaning using high impact accurate spray targeting, they incorporate existing and new technologies to provide an environmentally friendly, low water and energy usage washing facility for IBC washing.

Description

Built to hygienic and sanitary standards and complying with ASME BPE, GAMP, ISPE and 21CFR11, the IBCWashBooth™ is available as a single door or pass through version, supplied worldwide to the Biotech, Pharmaceutical, Medical, Healthcare, Personal Care and other critical processing industries. Including internal and external IBC cleaning and drying, they incorporate technologies to provide repeatable patterns to ensure total coverage of all surfaces. The BoothWasher™ provides liquid heating, chemical dosing, air drying, valving, pumps, instrumentation and an in-built control system.

Typical Installation



Design Options

Wash all types and sizes of IBC's, Cone Valve, Butterfly Valve & others.

Number of doors & hinge orientation to suit facility layout and goods movement.

Systems integrated neatly into GMP facility with support services located in technical spaces.

Alternative IBC loading methods — conveyors, AGV or other.

Automatic actuation/opening systems for IBC inlet lids & outlet valves

Buffer water storage tanks.

Re-circulation of wash water

Multiple detergent/sanitiser additions

International design guidelines — cGMP, PED, ASME BPE, CE, GAMP, ISPE, FDA, 21CFR11, ATEX & EHEDG.

Data logging — retention of cycle records.

Communication with other systems such as DCS.

Validation package with supporting documentation.

Simple 'relay logic' controls

Wash Booth Specification

Floor mounted booth adjustable level

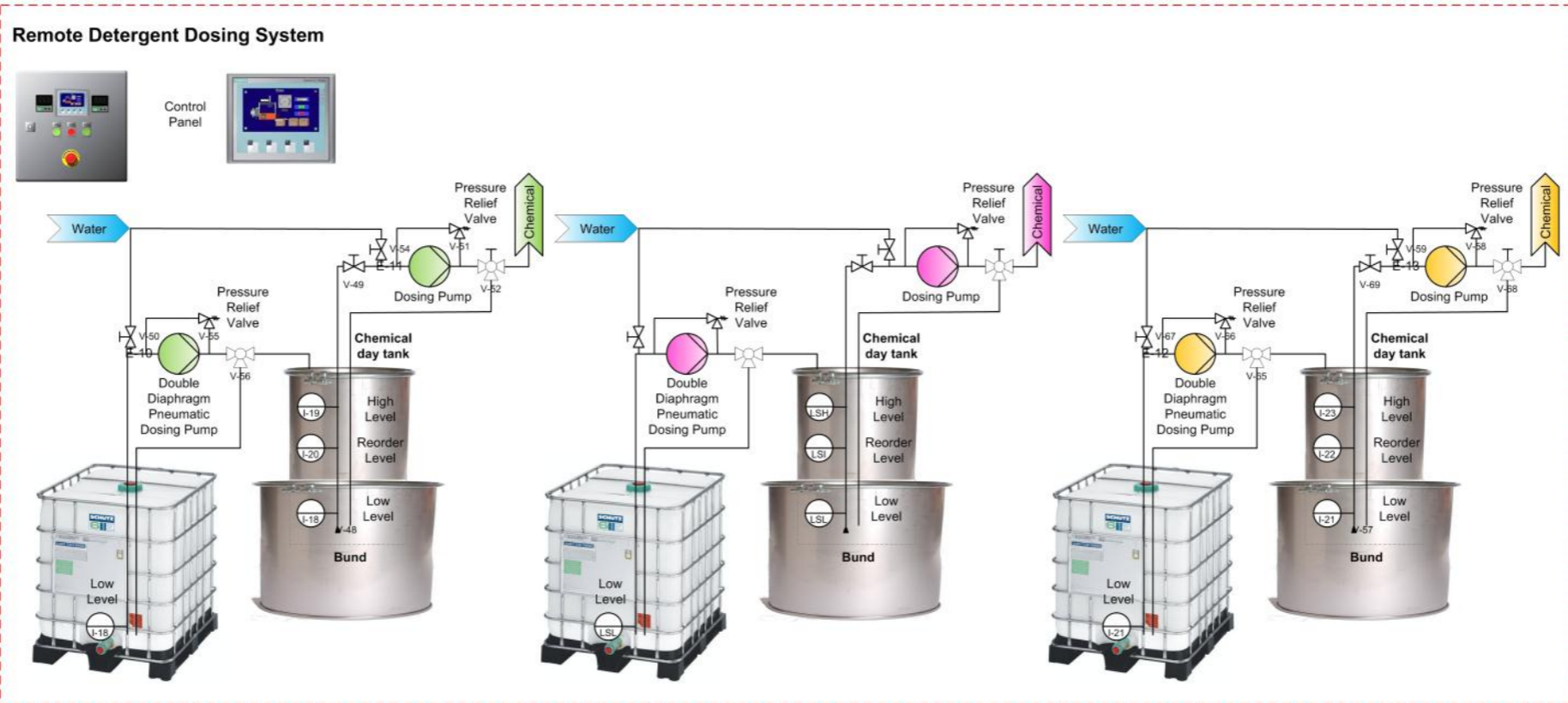
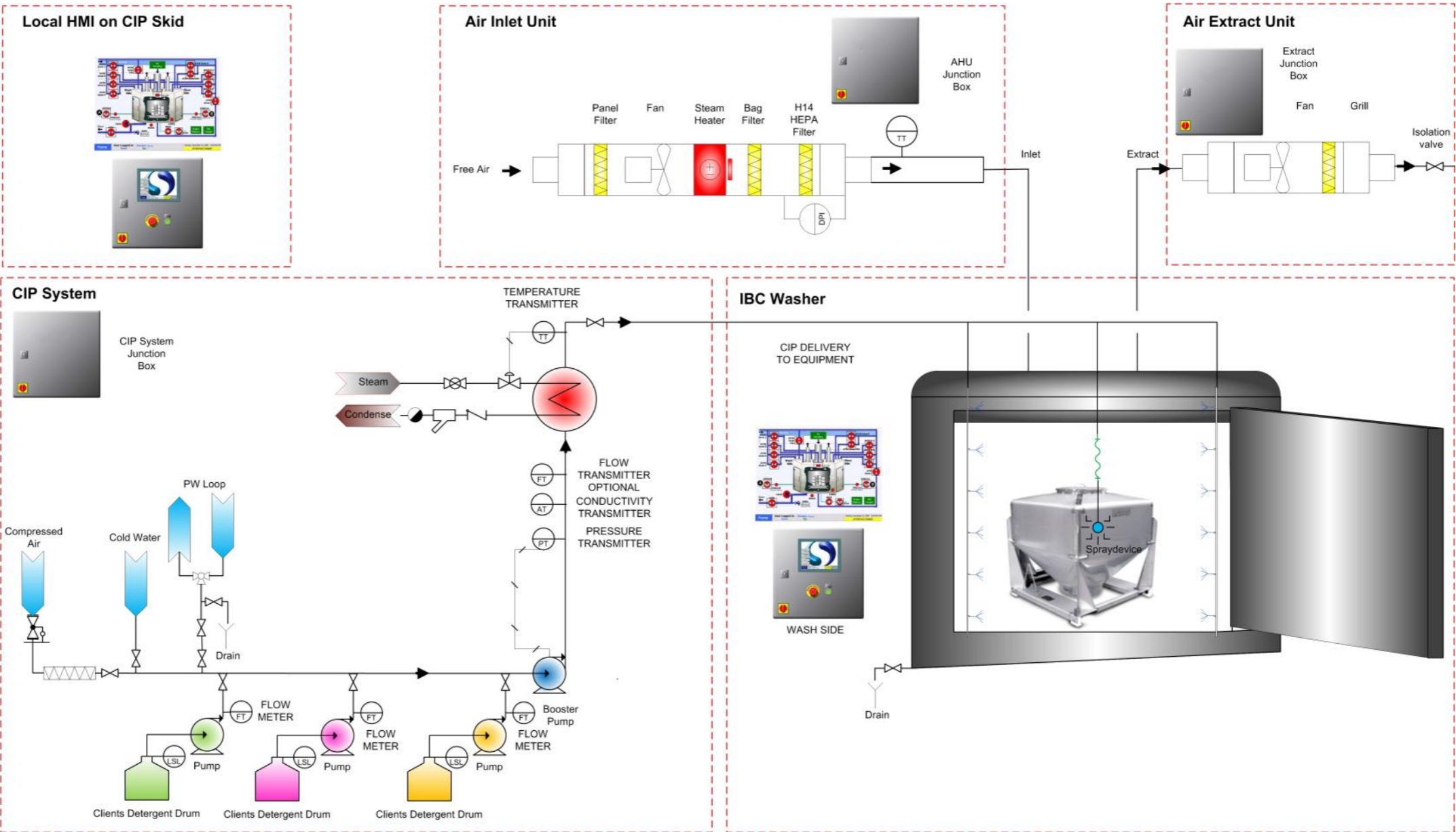
IBC located by forklift or pedestrian stacker truck

Hinged manual door(s) with air-tight inflatable seals.

All stainless steel 316/316L construction with insulation

IBC Washer Schemes

Suncombe IBC Washers can be combined with other Suncombe systems to provide a site wide washing and cleaning facility.



Lean Technology

Adopting LEAN principles, all Suncombe products are developed to ensure they minimise utilities and time, whilst ensuring the safety of the operators and the efficiency of the cleaning. Utilising innovative fluid handling techniques, they incorporate a combination of traditional and new technologies to provide an environmentally friendly, low water and energy usage washing facility that is safe and ergonomic for the operators.

Support

The Suncombe Technical Support and Customer Care departments' obligation is to provide total customer support. This support starts at the proposal stage, continues throughout the contract and thereafter. A personal customer care agent will be assigned to you at quotation stage and will support you throughout. The department currently supports all of our clients over the last 50 years. Support includes advise and surveys, installation and commissioning, User training, call-out repairs and service contracts for preventative maintenance.

Validation/ Documentation

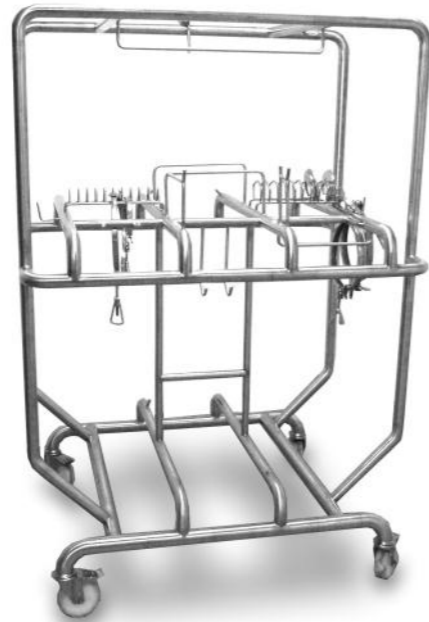
The lifecycle approach is adopted (DQ, FDS, HDS, SDS, FAT, SAT, IQ & OQ) with validation being key to every stage of the development process, including Factory Acceptance Testing (FAT), SAT and Qualification.

Control Systems

Control systems available in a number of different versions, from the basic single recipe ControlSuite1000™ to complex 21CFR11 compliant SCADA based ControlSuite4000™. All versions are designed to provide the optimum control for ideal processing. The ControlSuite3000™ is the most common version used on the IBCWashers.

External Cleaning

External cleaning is by provided by Suncombe exclusive Splurge Bars, providing repeatable results at low flow and low energy usage.



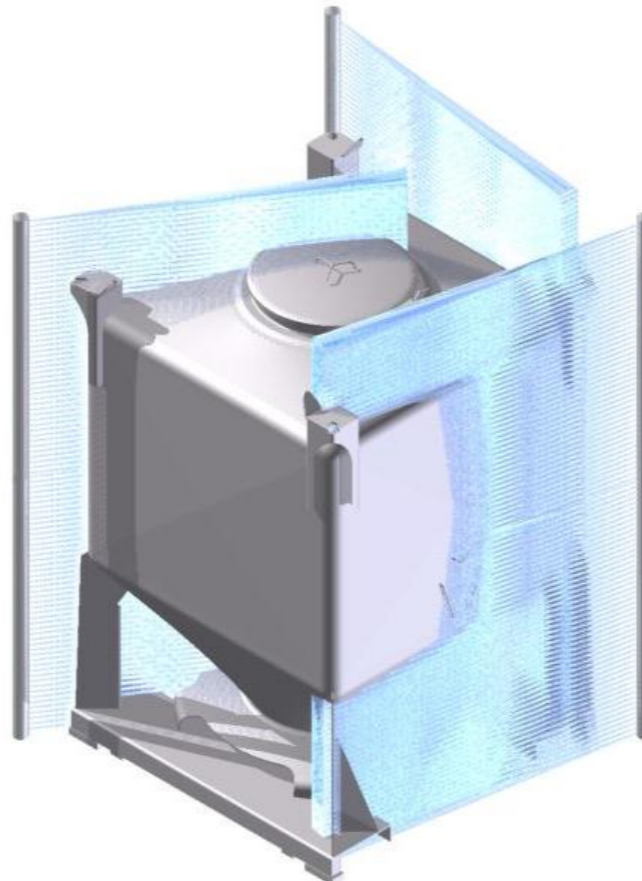
IBC Washer Accessories

The IBC Washers can be fitted with many accessories including:

- Cone Valve Actuation
- Split Butterfly Valve Actuation
- Automatic Lid Removal
- Automatic Doors
- Targeted Spray Areas
- Loading Conveyors and Cartridges
- Automatic Loading and Unloading Systems
- Bar Code Identification
- Lights Out Operation

Component Trolleys

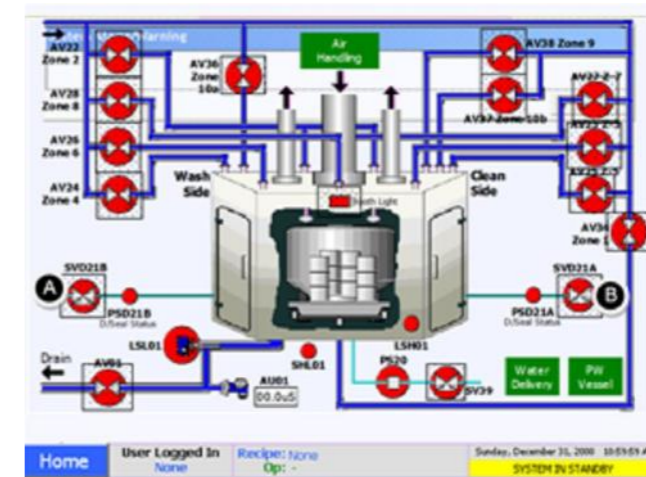
The Washers can also be used to wash and clean other equipment. Custom designed trolleys and racks are available, with 3D models, to clean any equipment required in a repeatable, validateable method.



ControlSuite™ 3000

The Level 3000 Automation system provides a high resolution full colour HMI operator interface providing the facilities to control the system, view the operation, preset all of the parameters and carry out maintenance and diagnostics. It provides a robust and reliable automatic operation. Incorporating a high level PLC controller, the Level 3000 Automation system is designed with the facilities required to provide up to 100 repeatable automatic cycles with a versatile colour graphical HMI for operator interface.

The HMI incorporates an intuitive menu structure, allowing up to 10 different user levels. The levels are individually configurable, with the lower levels allowing simple operations with the higher levels allowing full configuration of the operating parameters and system settings.



Specification

- Enclosure Material:** Stainless steel (other materials available on request)
- Temperature range:** 5°C to + 50°C
- Operating Voltage:** 230VAC or 400VAC (24VDC control)
- Hardware:** Allen Bradley and Siemens PLC and HMI Solution (option for DCS control)
- Reporting:** Printed records and 21CFR11 electronic records and batch reports.
- Operator Interface:** 8" high resolution colour graphical touch screen HMI (also available with 10" or 15")
- Operations/Recipes:** 100
- Additional Operator Positions:** Remote touch screen HMIs
- Parameter Setting Method:** From HMI or remote control
- Number of HMI Screens:** 30
- Manual Operation:** From HMI mimic diagrams and output/input page on HMI
- External Interfaces:** Digital, Analogue and Messages, hard wired, ethernet or Profibus
- User Passwords:** Yes
- Data Recording:** Printer, optional electronic data recorder
- Documentation:** Advanced
- Validation:** Advanced