



SUNCOMBE
CIP & PROCESS ENGINEERS

**PureCIP™
Systems**



Suncombe Ltd, Jade House, Lockfield Avenue, Brimsdown, Enfield, Middlesex, EN37JY, United Kingdom

T +44(0)20-8443-3454 F +44(0)20-8443-3969 E info@suncombe.com W www.suncombe.com

www.suncombe.com

Message From Chairman

Our company was created over 50 years ago specifically to supply a high quality range of process cleaning and sanitary processing equipment. To continually achieve our goals, we use the most up-to-date facilities and employ the best-qualified and experienced staff.

Suncombe Commitment

Our commitment is to Design and Build in-house. This commitment has produced a work force made up of highly motivated and experienced personnel who have all proved their dedication to the industry.

Guarantee

Suncombe Limited guarantees that all of the systems we supply would operate in accordance with your stated requirements and our design solutions included in our proposals.

Total Responsibility

Our business philosophy is to carry out all aspect of a project with long term employed permanent staff. This allows us to take total control of all projects and guarantee the quality of all aspects of the project. We feel that this is critical in regard to Software, Instrumentation, Fabrication and Electrical works. This policy also allows us to give full support for all aspects for the lifetime of the equipment. We currently still support and maintain our equipment from 1961, the time of our company formation.

Quality Statement

We define our approach to quality as meeting or exceeding our customer's requirements for products and services. Our criteria include Satisfaction of Customers requirements, Zero Defects, On-Time delivery and Continued Product Support. All company functions are executed in accordance with our quality assurance system. We have a company-wide commitment to quality, which is integral to our business culture. Quality will remain our top priority and we will strive to provide quality in all aspects of our products and services.

Our Values

- We act with integrity and show respect
- We are passionate about our business and our products
- We aim for Engineering Excellence
- We offer Value for Money
- We pride ourselves on Innovative Design
- We offer Quality in everything that we do
- We use robust Health and Safety guidelines
- We strive to continuously increase our Knowledge
- We promote environmentally responsible practices



Validation Documentation

Typical documents packages include Document Index, Quality Plan, GANTT Programme, FDS, HDS, SDS, P&ID Drawings, GA Drawings, Equipment List, Instrument List, Circuit Drawings, Software Code and Test Protocols.

Validation Lifecycle

Our products follow the GAMP Validation Life Cycle with documentary evidence of procedures and processes during design, development, pre-construction, construction and commissioning.

Company Policies



Customer Care

The Suncombe Customer Care department's obligation is to provide total customer support. This support starts at the proposal stage, continues throughout the contract and thereafter. A personal customer care agent will be assigned to you at quotation stage and will support you throughout.

Validation Documentation

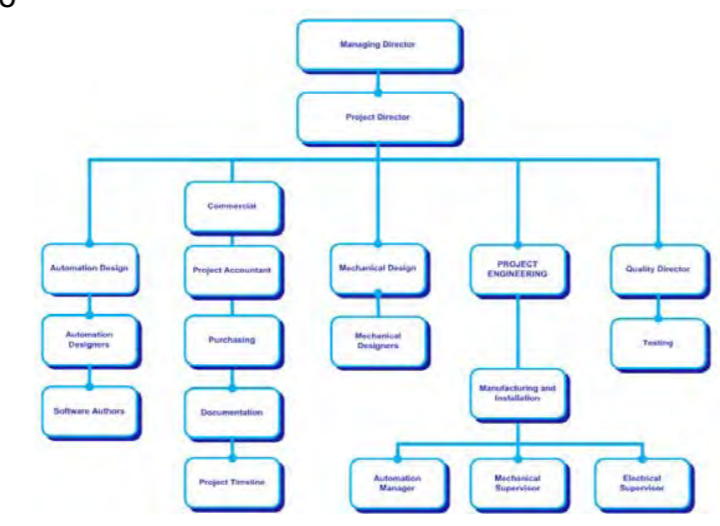
Typical documents packages include Document Index, Quality Plan, GANTT Programme, FDS, HDS, SDS, P&ID Drawings, GA Drawings, Equipment List, Instrument List, Circuit Drawings, Software Code and Test Protocols.

Project Management

Individual Project Teams are selected for every project, with a Project Manager or Project Director as a single point of contact and a single point of responsibility.

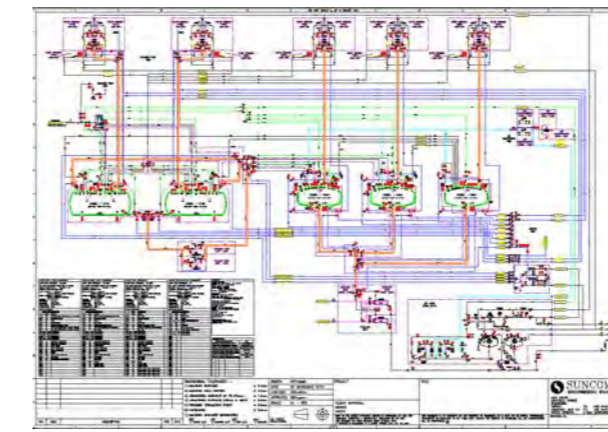
Our Business

1961 -2012 - 51 years of Engineering Excellence
 Pioneers of Hygienic Processing, Effluent Treatment, Washing, Cleaning & Sterilising
 Worldwide network of sales and service agents
 UK Design and Manufacture to CE, cGMP, ASME BPE, GAMP, ATEX
 In-house personnel for all disciplines
 Motivated, dedicated and experienced Long Term Workforce
 Single point of contact for all aspects of a Project



Our Design

PFD, P&ID, Schematics and Circuit Diagrams in ACAD
 Autodesk Inventor 3D Modelling is employed throughout the design process



Typical Clientele



Our Sectors

Pharmaceutical, Biotechnology, Research, Cosmetics, Toiletries, Healthcare, Medical, Food, Beverage and other hygienic and critical Processing Industries

Products

EDS - Effluent Decontamination Schemes



IBC Wash Booths



Mobile Cleaning In Place Systems



Static Cleaning In Place Systems



Tanks, Vessels and Mixers



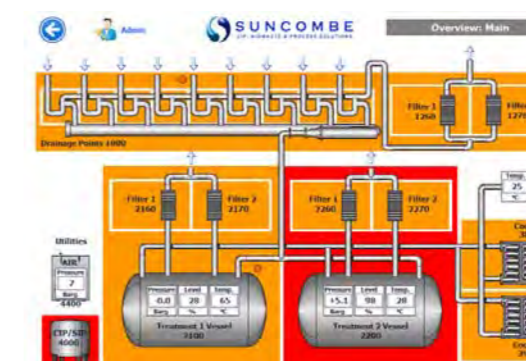
Processing Skids and Schemes



Parts Washers



Automation and Control Systems



Bespoke Designed Systems and Skids

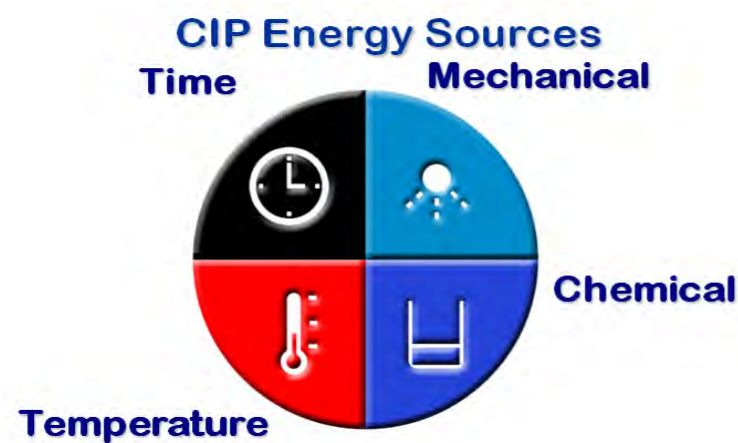


Suncombe PureCIP™ Range Details

The Suncombe PureCIP™ range has been developed over 45 years for providing a robust, reliable means of supplying repeatable, validateable, controllable CIP cleaning. Every unit is specifically designed for its particular application and is developed by Suncombe CIP engineers together with the client personnel to provide the optimum cleaning system and a simple validation trail. The range is based on standard modules with individual units custom designed and built - in-house - for your specific application. Manual or automatically operated, the systems are used for cleaning tanks, Vessels, Vats, Fermenters, Mixers, Processors, Pipework, Valves, Isolators, Glove Boxes, Mills, Coaters, Filters, Pumps, Dryers, Tumblers, Fillers and many other applications.

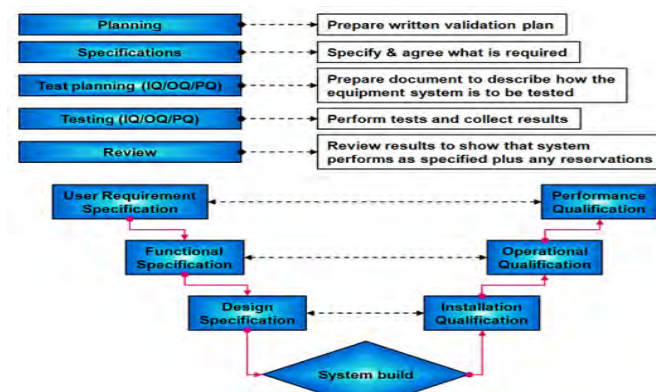
Duties

CIP flowrates from 10 litres per minute to 350 litres per minute at pressures from 1 bar to 9 bar. Water temperatures up to 95°C. One to four detergent facilities with validateable concentrations up to 10%. None, one, two, three or more storage tanks. Versions available to incorporate Sterilisation In Place (SIP) and ATEX systems.



Validation/ Documentation

The lifecycle approach is adopted (DQ, FDS, HDS, SDS, FAT, SAT, IQ & OQ) with validation being key to every stage of the development process, including Factory Acceptance Testing (FAT), SAT and Qualification.



CIP Tanks and Vessels

Sanitary designed 316L stainless steel atmospheric or pressure vessel, Typically designed to PED, PD5500, BS EN 13445 and ASME VIII.



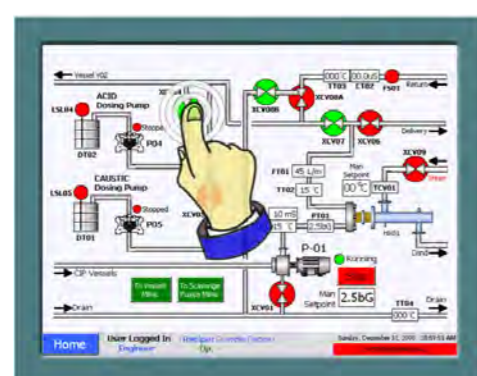
Automation System

The Integrated CIPSuite™ automation packages are designed to be operator friendly and simple to use whilst providing flexibility and optimisation. Reliable and robust, they have been developed over the last 10 years in co-ordination with clients operations staff, engineers and validation staff. They encompass all elements required to provide a controllable, repeatable automatic system.

A range of automation levels are available, starting from low level semi-automated systems, through low and mid level PLC and HMI versions, to advanced SCADA based systems. All levels are designed with the facilities required to provide a repeatable automated cycle.



Level 1000 Basic System



Level 3000 Advanced System

Manufacturing Standards

- 316 stainless steel product contact parts, 304 non-contact parts, Hastelloy and Duplex Stainless
- ASME BPE, 3A, cGMP standards, fully drainable, crevice free.
- T.I.G. Welding; using an argon gas purge, using a computer controlled enclosed head orbital welding plant, carried out by technicians coded to EN 287, to Suncombe procedures coded to EN ISO 15609, tested to EN ISO 15614 Part 1.
- ASME BPE standard Pipework, fully annealed, chemistry to ASTM A-269, manufactured to ASTM A-270, and 3A Standard.



CIPSuite4™ Intelligent Options

The CIPSuite™ automation packages have options for:

- Historical Archiving
- Trending
- Web Access
- 21CFR11 Compliance
- Server/Client Architecture
- Networking
- OPC, SQL, ODBC, OLE-DB Integration
- Downtime Monitor (for OEE)



Totally Integrated Automation

CIPSuite™ 2 to 4 Versatile Recipe Control

Build your own recipe/operational method from sequences, including:

- Flush to drain
- Pre-rinse
- Chemical make-up
- Recirculation Cleaning
- Single Pass Cleaning
- Final rinse
- Drain
- Air Purge
- Self CIP



Instrumentation

High quality analytical and process instrumentation.



Process Valves

Sanitary and sterile process routing valves providing mixproof, dead leg free routing.



Filter Housings

Single or multi-element sanitary housings with heaters and 0.2 µm filters from 316L stainless steel, Hastelloy and Duplex Stainless



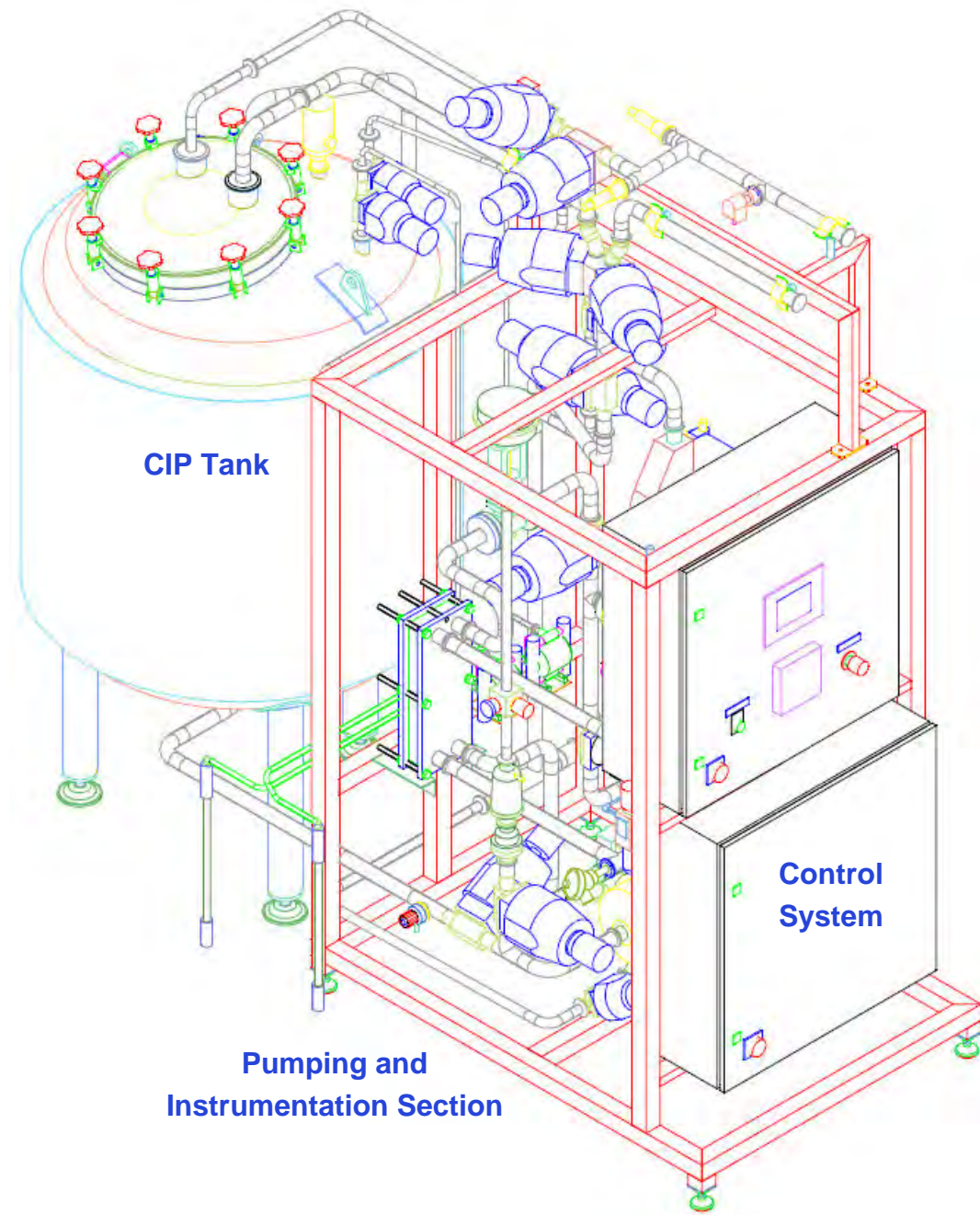
Sanitary Pump

In built Sanitary Centrifugal feed and liquid ring return pumps

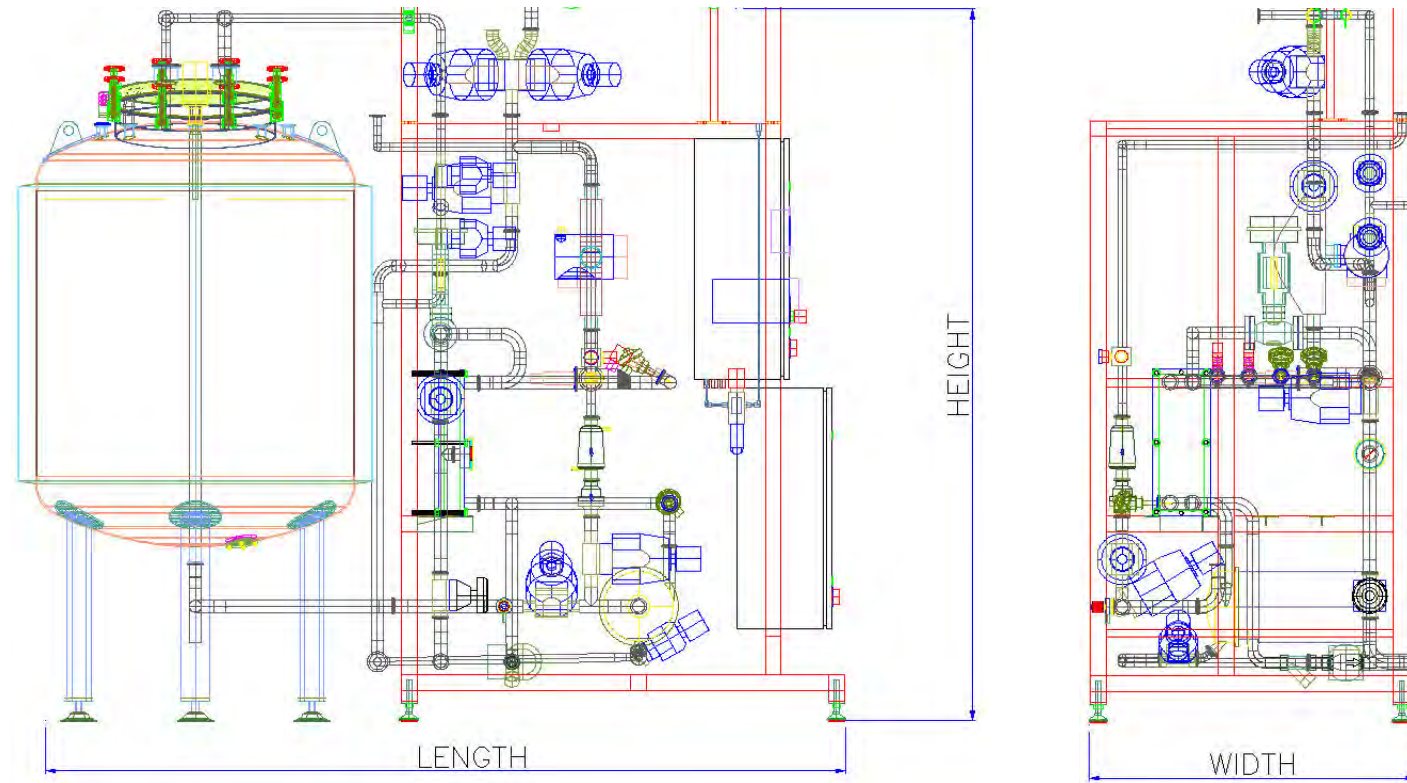
ASME BPE Pipework and Triclamp Fittings



Typical One Tank PureCIP™ Model

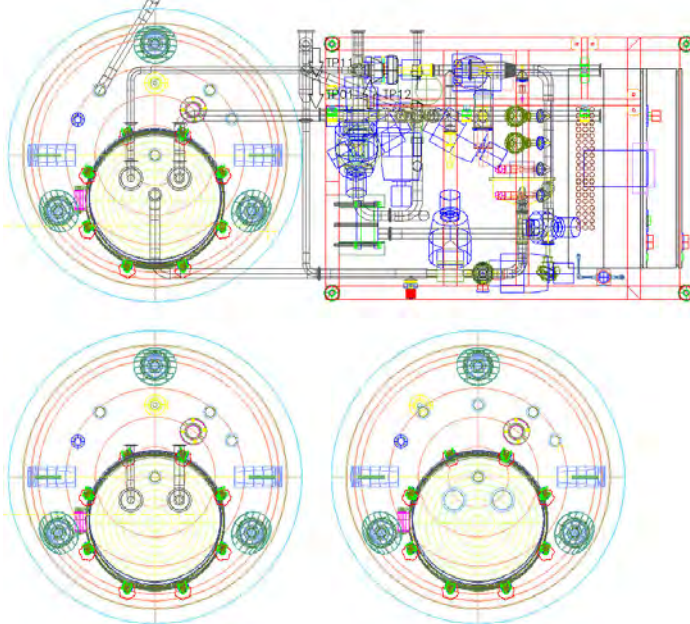


One Tank PureCIP™ Dimensions

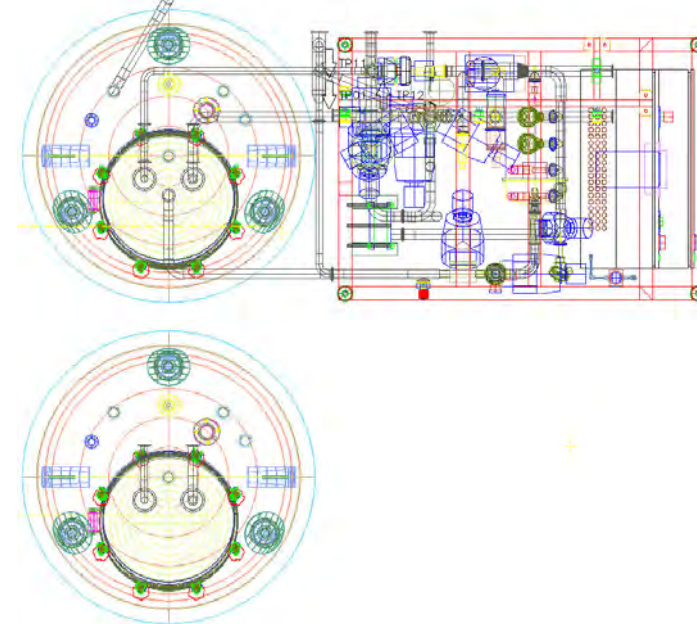


Part #	Dimensions mm				
	Tank Volume Litres	Flow lpm	Height mm	Length mm	Width mm
PureCIP™1/500	1 x 500	0 - 60	2,000	2,100	1,000
PureCIP™1/1000	1 x 1000	0 - 80	2,000	2,300	1,000
PureCIP™1/1500	1 x 1500	0 - 90	2,400	2,500	1,100
PureCIP™1/2000	1 x 2000	0 - 120	2,800	2,800	1,500
PureCIP™1/2500	1 x 2500	0 - 150	3,000	3,000	1,700
PureCIP™1/3000	1 x 3000	0 - 200	3,200	3,200	1,900

Typical Three Tank PureCIP™



Typical Two Tank PureCIP™



Typical Two Tank PureCIP™



Individual Configuration

The dimensions noted above are typical dimensions. All PureCIP™s are individually configured for each clients specific application, location and preferences. Consequently dimensions and layouts can be individually tailored for every application.

Please contact our sales or design staff for further details of different layouts or multi-tank layouts.