



**SUNCOMBE**  
CIP & PROCESS ENGINEERS

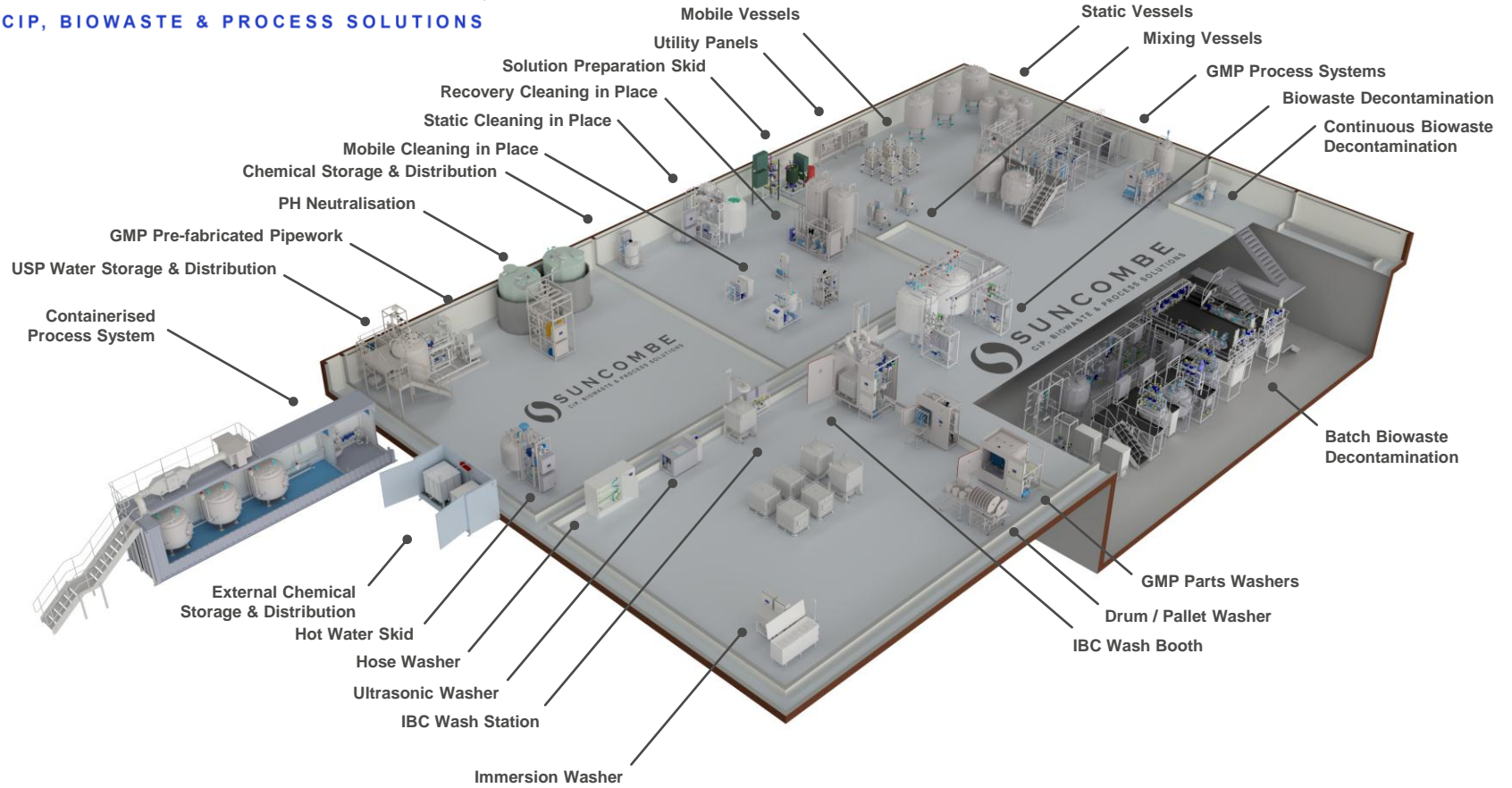
# PureKleen™ Parts Washer



Suncombe Ltd, Jade House, Lockfield Avenue, Brimsdown, Enfield, Middlesex, EN37JY, United Kingdom

T +44(0)20-8443-3454 F +44(0)20-8443-3969 E [info@suncombe.com](mailto:info@suncombe.com) W [www.suncombe.com](http://www.suncombe.com)

[www.suncombe.com](http://www.suncombe.com)



**LEAN Technology**

Adopting LEAN principles, all Suncombe products are developed to ensure they minimise utilities and time, whilst ensuring the safety of the operators and the efficiency of the processing. Utilising innovative concepts, they incorporate a combination of traditional and new technologies to provide an environmentally friendly, low utility and energy usage facility that is safe and ergonomic for the operators. Our automated systems are configured to incorporate LEAN principles including Overall Equipment Effectiveness, Energy Lean, downtime maintenance and other procedures.

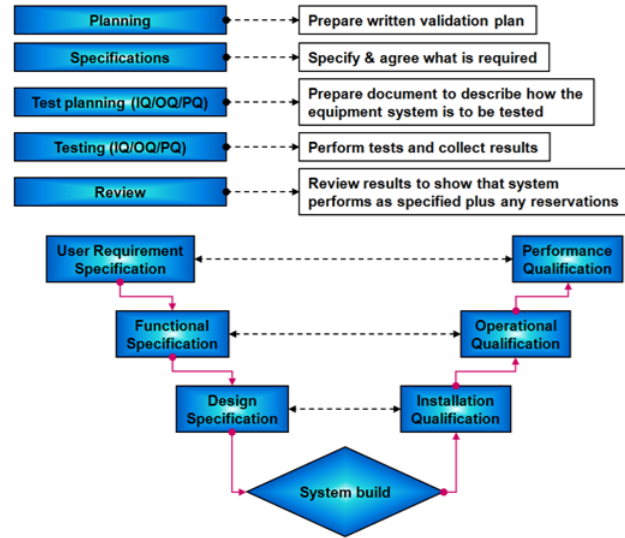


**Manufacturing Standards**

- 316 stainless steel product contact parts, 304 non-contact parts, Hastelloy and Duplex Stainless
- ASME BPE, 3A, cGMP standards, fully drainable, crevice free.
- T.I.G. Welding; using an argon gas purge, using a computer controlled enclosed head orbital welding plant, carried out by technicians coded to EN 287, to Suncombe procedures coded to EN ISO 15609, tested to EN ISO 15614 Part 1.
- ASME BPE standard Pipework, fully annealed, chemistry to ASTM A-269, manufactured to ASTM A-270, and 3A Standard.

**Validation/ Documentation**

The lifecycle approach is adopted (DQ, FDS, HDS, SDS, FAT, SAT, IQ & OQ) with validation being key to every stage of the development process, including Factory Acceptance Testing (FAT), SAT and Qualification.



**CIPSuite4™ Batch Records**

Hard copy printed records or Electronically recorded Batch records.



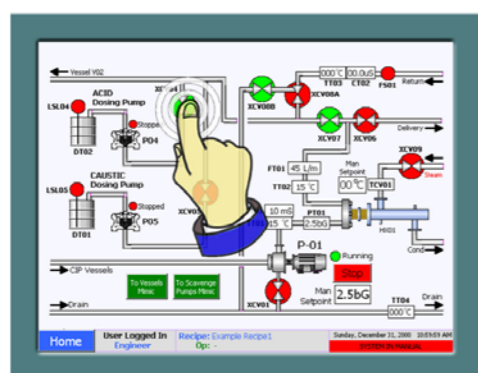
**Automation System**

The Integrated CIPSuite™ automation packages are designed to be operator friendly and simple to use whilst providing flexibility and optimisation. Reliable and robust, they have been developed over the last 10 years in co-ordination with clients operations staff, engineers and validation staff. They encompass all elements required to provide a controllable, repeatable automatic system.

A range of automation levels are available, starting from low level semi-automated systems, through low and mid level PLC and HMI versions, to advanced SCADA based systems. All levels are designed with the facilities required to provide a repeatable automated cycle.



Level 1000 Basic System



Level 3000 Advanced System



Totally Integrated Automation

**CIPSuite4™ Intelligent Options**

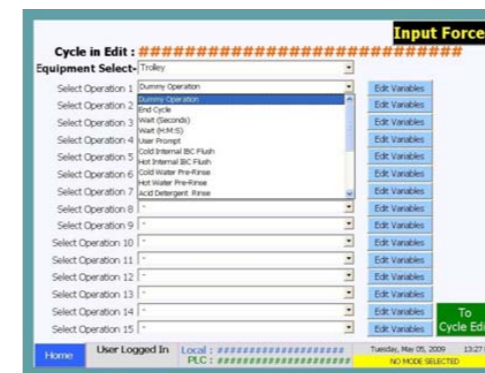
The CIPSuite™ automation packages have options for:

- Historical Archiving
- Trending
- Web Access
- 21CFR11 Compliance
- Server/Client Architecture
- Networking
- OPC, SQL, ODBC, OLE-DB Integration
- Downtime Monitor (for OEE)

**CIPSuite™ 2 to 4 Versatile Recipe Control**

Build your own recipe/operational method from sequences, including:

- Flush to drain
- Pre-rinse
- Chemical make-up
- Recirculation Cleaning
- Single Pass Cleaning
- Final rinse
- Drain
- Air Purge
- Self CIP



**Doors**

Hinged or sliding doors, single sided or on both sides for Pass Through systems.



**Racks and Trolleys**

Standard and custom designed racks and trolleys



**Instrumentation**

High quality analytical and process instrumentation.



**Process Valves**

Sanitary and sterile process routing valves providing mix-proof, dead leg free routing.

**Detergent Enclosure**

Storage area for one or two detergents



**Sanitary Pump**

In built Sanitary Centrifugal feed and liquid ring return pumps

**ASME BPE Pipework and Triclamp Fittings**

