



**SUNCOMBE**

CIP, BIOWASTE & PROCESS SOLUTIONS

# Chemical Distribution



Suncombe Ltd, Jade House, Lockfield Avenue, Brimsdown, Enfield, Middlesex, EN37JY, United Kingdom

T +44(0)20-8443-3454 F +44(0)20-8443-3969 E [info@suncombe.com](mailto:info@suncombe.com) W [www.suncombe.com](http://www.suncombe.com)

[www.suncombe.com](http://www.suncombe.com)



**Chemical Distribution Schemes**

Suncombe **Chemical Distribution Schemes** are a robust range of heavy duty schemes for internal and external storage and distribution of liquid chemicals. Primarily used in the pharmaceutical, biotech, food, beverage, healthcare and other critical sectors, they encompass the high quality of design, manufacture and documentation required in these sectors.

**Features**

- Developed and manufactured in the United Kingdom
- Safe storage for chemicals in internal or external locations
- Self bunded systems with combined or split bunds
- Local day tanks, pumping stations and manual filling stations
- External versions weatherproofed, heated and ventilated
- Safety showers and eyebaths
- Available for many liquid solutions and chemical compounds
- High quality stainless, duplex, PE and compatible material schemes
- 316 stainless steel pipework as standard
- Duplex steel or plastic pipework for chemical compatibility
- Safety Interlocks to SIL2
- Automatic or manual changeover of twin IBCs or drums
- Pressure relief and safety devices
- Risk assessment, method statements, operating instructions and full documentation
- 2D drawings and 3D models supplied
- Factory Acceptance Testing Included

**Manufacturing Standards**

- 304/316 stainless steel non-wetted parts and framework
- 316 stainless steel product contact parts, 304 non-contact parts, Hastelloy, Duplex Stainless and plastic for chemical compatibility
- T.I.G. Welding; using an argon gas purge, carried out by technicians coded to EN 287, to Suncombe procedures coded to EN ISO 15609, tested to EN ISO 15614 Part 1.
- Electrical and safety design EN 60204



**Options**

- Standard units available or custom designed to suit your application
- Single, dual or triple IBCs and/or drums available
- Range of different pump duties or gravity feeds available to suit requirement
- Stainless steel or plastic enclosures/frames, guards and covers available
- On board mixing systems together with heating and cooling available
- Manual Decant Enclosures, day tanks and pumping stations available
- For internal or external weatherproof location
- Alternative voltages and build standards for international supply
- Automation integration for multiple systems or for external control systems
- Dataloggers for reporting and records
- Modem link to Suncombe headquarters for on line monitoring
- ATEX or safe area versions



Typical 2 x IBC External Store



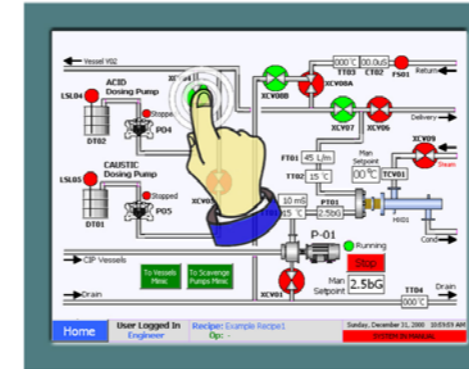
Typical 2 x IBC Internal Distribution Store

**Automation**

Offering total flexibility with manual, semi-automatic, automatic and recipe controlled operation, they are designed to be operator friendly and simple to use whilst providing flexibility and optimisation. Reliable and robust, they have been developed over the last 55 years in co-ordination with clients operations staff, engineers and validation staff. They encompass all elements required to provide an accurate, safe, controllable, repeatable system.



Level 1000 Basic System



Level 3000 Advanced System

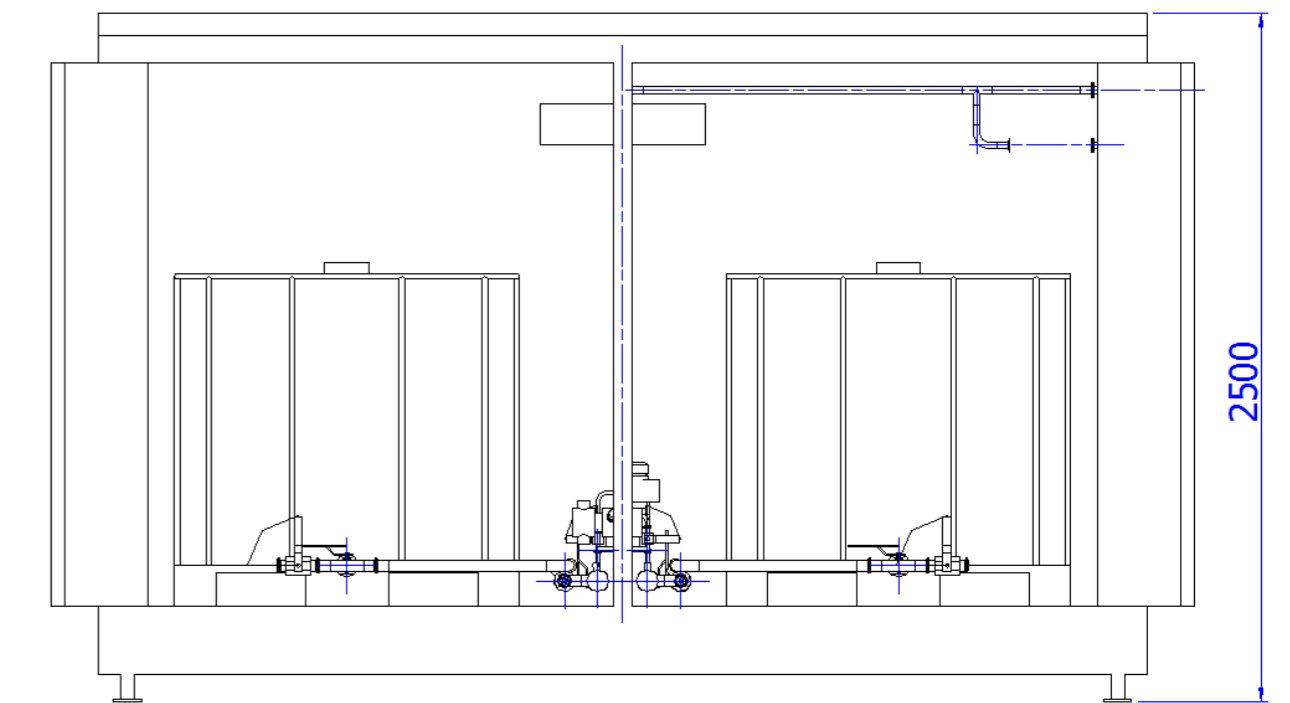


Typical External Store Internals View

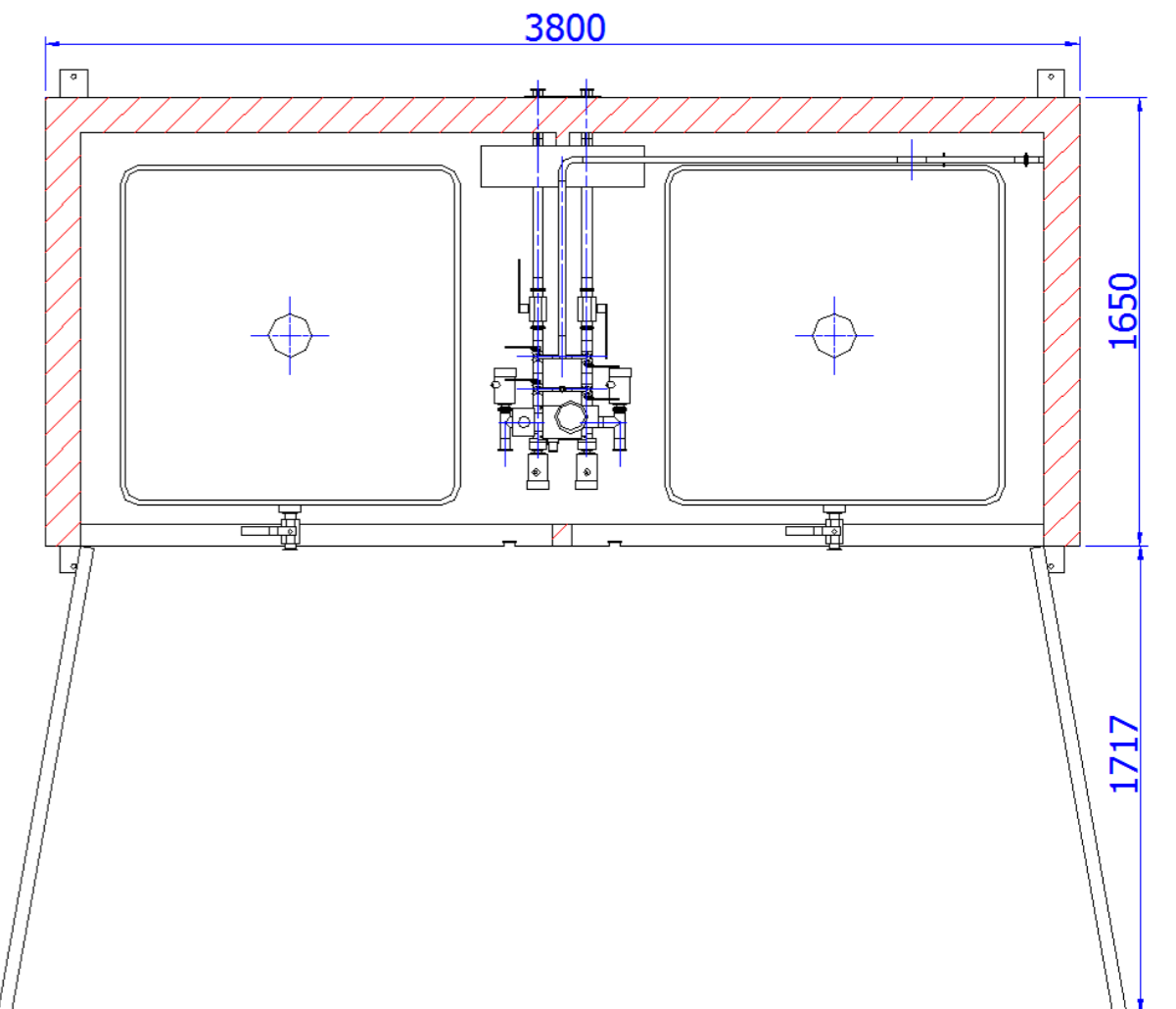
**Typical 2 x IBC External Store**



Typical 1 x 200 litre Drum External Store



Dimensions for Typical 2 x IBC External Store



Typical Manual Decant Enclosure

